

Regional Conservation Partnership Program

RCPP

Regional Conservation Partnership Program



Webinar Session
June 3, 2014 9:00am
Dennis Kimberlin, ASTC-P



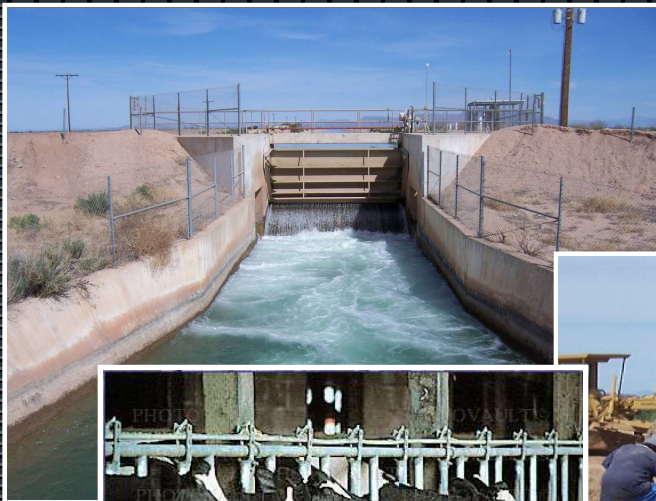
RCPP

Regional Conservation Partnership Program



Regional Conservation Partnership Program

is a new program that mobilizes partnerships to multiply investments and reach common conservation goals.



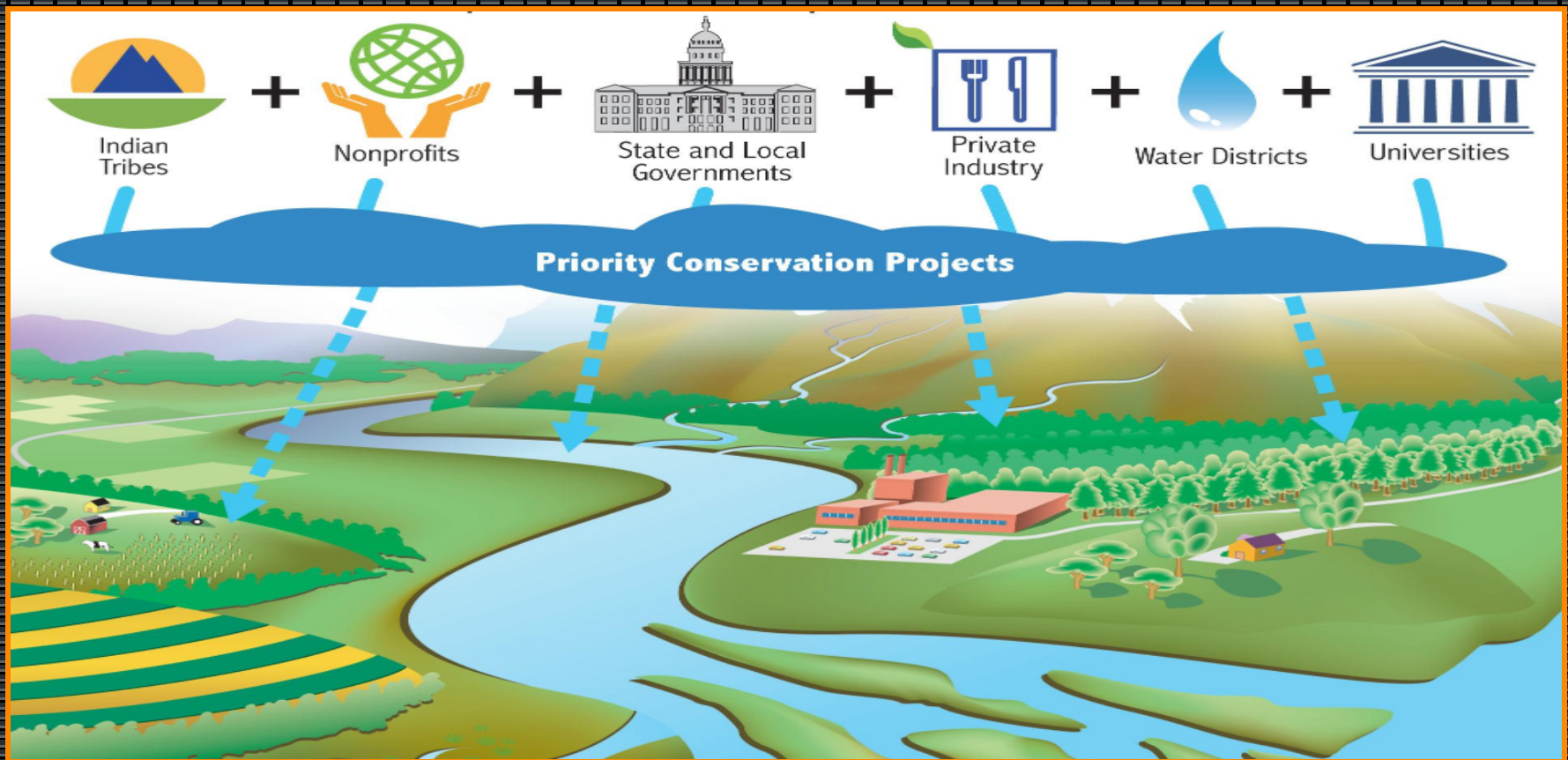
A new 2014 Farm Bill conservation program that:

- Furthers the conservation, restoration, and sustainable use of soil, water, wildlife on a regional scale
- Encourages partners to cooperate with producers
- Provides assistance through:
 - Partnership agreements
 - Program contracts or easement agreements
- Combines the purposes and functions of four previous regional programs:
 - AWEPP, CBWP, CCPI, Great Lakes Program
- Utilizes one new and three existing programs:
 - ACEP(new), EQIP, CSP, HERP

RCPP

Regional Conservation Partnership Program

- **More Partners** bring innovation, new ideas, resources and local expertise to solve problems

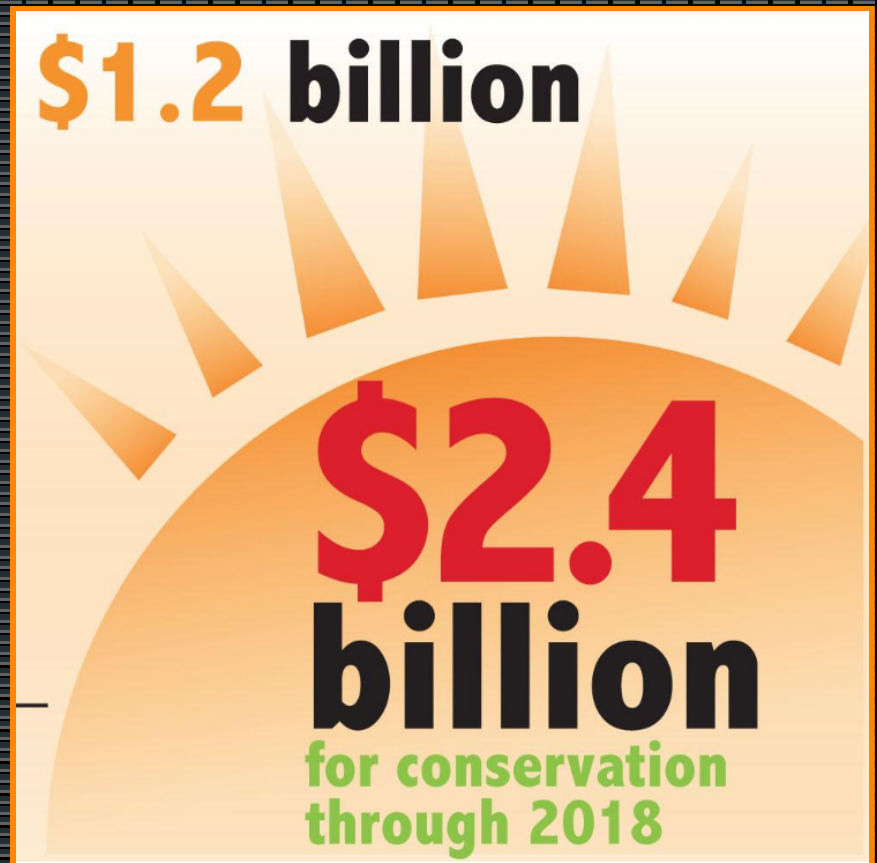


RCPP

Regional Conservation Partnership Program

Receives funding:

- \$100 million each year directly from the Farm Bill
- Also, by reserving 7% of funds from the four covered programs annually
- Over five years, USDA plans to invest up to \$1.2 billion with partners matching funding that could be as much as \$2.4 billion for conservation



RCPP

Regional Conservation Partnership Program

Allocates funding by:

- 40% for projects based on a national competitive process
- 25% for a state competitive process administered by STC's
- 35% for projects in critical conservation areas

40% National
(multi-state projects)



25% State
(state projects)



35% Critical Conservation Areas
(areas designated by Secretary)



Allows the Secretary to establish Critical Conservation Areas:

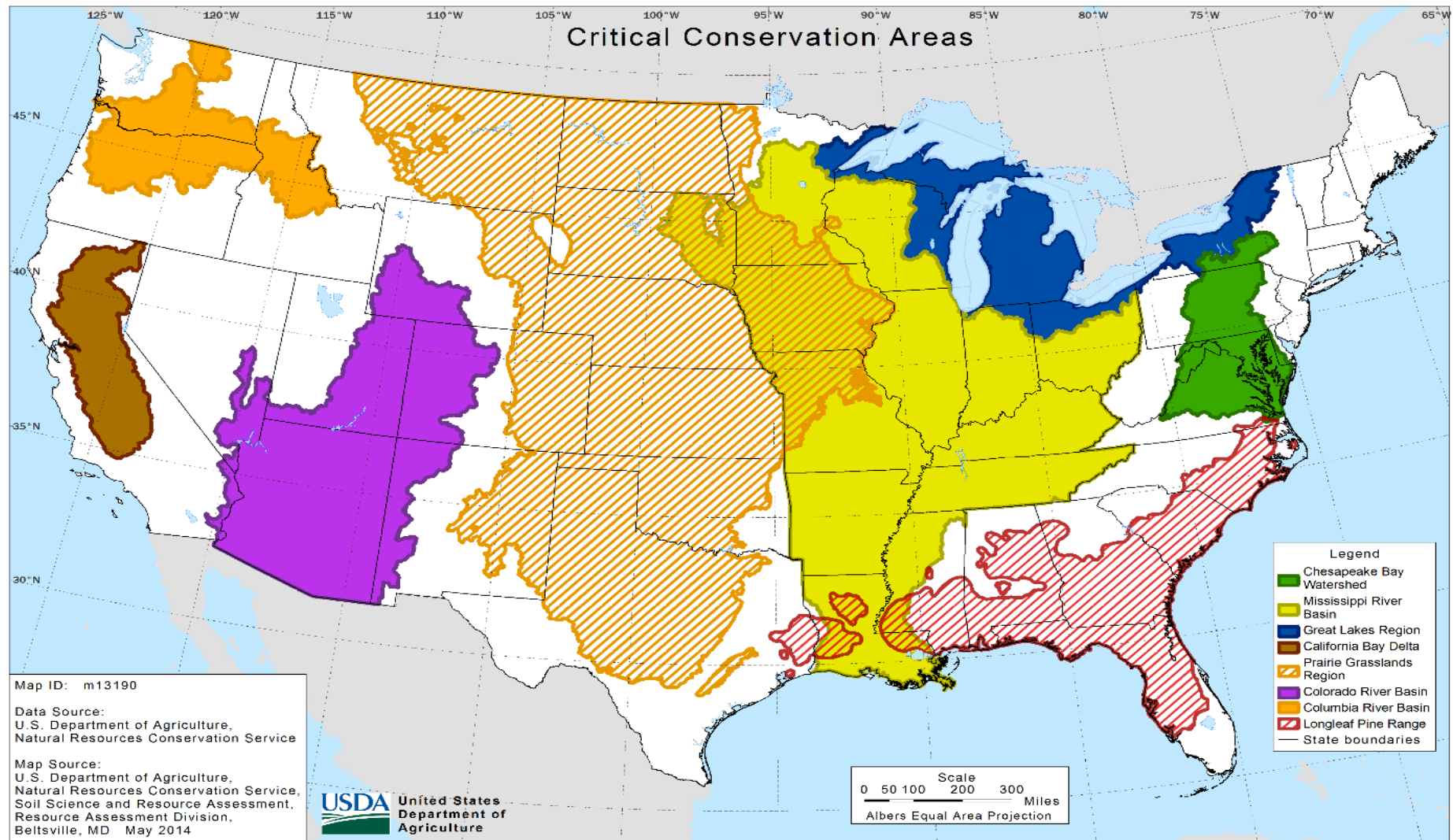
- Up to 8 areas
- Give priority to areas:
 - With significant agricultural production
 - Benefiting from water quality or quantity improvement
 - Containing landowners and producers that need to meet or avoid negatively impacting regulations

Critical Conservation Areas

1. Great Lakes Region (IL, IN, MI, MN, NY, PA, OH, WI)
2. Chesapeake Bay Watershed (DE, MD, NY, PA, VA, WV)
3. Mississippi River Basin (AR, KY, IA, IL, IN, LA, MN, MS, OH, SD, TN, WI)
4. Longleaf Pine Range (AL, FL, GA, LA, MS, NC, SC, TX, VA)
5. Columbia River Basin (ID, OR, WA)
6. California Bay Delta (CA)
7. Prairie Grasslands Region (CO, KS, IA, MO, MN, MT, ND, NE, NM, SD, TX, WY)
8. Colorado River Basin (AZ, CA, CO, NM, NV, UT, WY)

RCPP

Regional Conservation Partnership Program

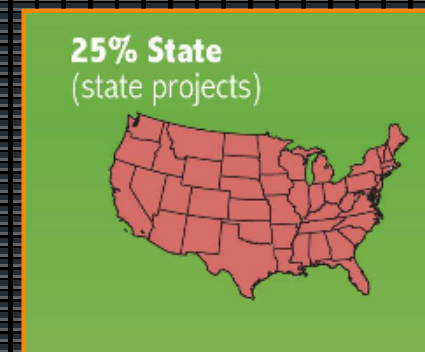


Colorado River Basin CCA

- Resource Concern Priorities
 - Water Quality Degradation:
 - Excessive salts in surface waters and ground waters
 - Insufficient Water:
 - Inefficient use of irrigation water
 - Soil Quality Degradation:
 - Concentration of salts and other chemicals
 - Inadequate Habitat for Fish and Wildlife:
 - Habitat degradation

Priority Resource Concerns for Arizona

- Degraded Plant Condition
 - Undesirable plant productivity and health
 - Inadequate structure and composition
 - Excessive plant pest pressure
 - Wildfire hazard, excessive biomass accumulation
- Livestock Production Limitation
 - Inadequate water
 - Inadequate feed and forage
 - Inadequate shelter
- Fish and Wildlife – Inadequate Habitat
 - Inadequate cover/shelter
 - Inadequate food
 - Inadequate habitat continuity (space)
 - Inadequate water
- Insufficient Water Quantity
 - Inefficient use of irrigation water
 - Inefficient moisture management
- Water Quality Degradation
 - Excessive sediment in surface water
 - Salts in surface and ground water
 - Pesticides in surface and ground water
- Soil Erosion
 - Sheet and rill erosion
 - Wind erosion
 - Classic and Ephemeral gully erosion



Encourages Partnership Agreements:

- NRCS will conduct a competitive process to select applications for partnership agreements
- NRCS will make public the criteria used in evaluating



RCPP

Regional Conservation Partnership Program

NRCS is now accepting proposals for RCPP

- The announcement for program funding can be found on **grants.gov**. More information on the APF and the program can be found at nrcs.usda.gov

The screenshot shows the Grants.gov homepage with a search bar at the top right containing the text "Grant Opportunities" and a "GO" button. Below the search bar is a navigation menu with links: HOME, ABOUT, SEARCH GRANTS, APPLICANTS, GRANTORS, SYSTEM-TO-SYSTEM, FORMS, OUTREACH, and SUPPORT. The "SEARCH GRANTS" link is highlighted. Below the navigation menu, the "SEARCH GRANTS" section is visible. It includes a "BASIC SEARCH CRITERIA" section with input fields for "Keyword(s)", "Funding Opp #", and "CFDA Number", and a "SEARCH" button. To the right of the search criteria, there is a filter for "AGENCY: [X] All Department of Agriculture". Below the search criteria, there is a "SORT BY:" dropdown menu set to "Open Date (Descending)" and a "DATE RANGE:" dropdown menu set to "All Available". The search results are displayed in a table with the following columns: "Funding Opportunity #", "Opportunity Title", "Agency", "Open Date", and "Close Date". The first result is "USDA-NRCS-NHQ-RCPP-14-01" with the title "Regional Conservation Partnership Program", agency "Natural Resources Conservation Service", open date "05/27/2014", and close date "07/14/2014".

GRANTS.GOV™
FIND. APPLY. SUCCEED.®

CONTACT US | MANAGE SUBSCRIPTIONS | REGISTER | LOGIN

SEARCH: Grant Opportunities Enter Keyword... GO

HOME ABOUT SEARCH GRANTS APPLICANTS GRANTORS SYSTEM-TO-SYSTEM FORMS OUTREACH SUPPORT

GRANTS.GOV > Search Grants

SEARCH GRANTS

BASIC SEARCH CRITERIA:

Keyword(s):

Funding Opp #:

CFDA Number:

SEARCH

AGENCY: [X] All Department of Agriculture

SORT BY: Open Date (Descending)

DATE RANGE: All Available

Search Tips | Export Results

1 - 25 OF 50 MATCHING RESULTS: « Previous 1 2 Next »

Funding Opportunity #	Opportunity Title	Agency	Open Date	Close Date
USDA-NRCS-NHQ-RCPP-14-01	Regional Conservation Partnership Program	Natural Resources Conservation Service	05/27/2014	07/14/2014

- Pre-proposals are due July 14, and full proposals are due September 26

Eligible lands and partners for RCPP

- Eligible land includes:
 - cropland, grassland, rangeland, pastureland, nonindustrial forest land, other land incidental to agricultural production (wetlands, buffers etc.)
- Eligible partners may include:
 - agricultural producer associations, silvicultural producer associations, groups of producers, State or unit of local governments, Indian tribes, farmer cooperatives, water district, irrigation district, rural water districts, municipal water or wastewater treatment entities, conservation driven nongovernmental organizations, institutions of higher education

RCPP

Regional Conservation Partnership Program

Agriculture Secretary Tom Vilsack announces RCPP



<http://www.youtube.com/watch?v=eK2xya2DKoU&feature=youtu.be>

NRCS may give higher priority to proposals that:

- Deliver high percentages of applied conservation to address conservation priorities or local, State, regional, or national conservation initiatives
- Significantly leverage non-Federal financial and technical resources and coordinate with other local, State, regional, or national efforts
- Provide innovation in conservation methods and delivery
- Assist producers in meeting or avoiding the need for a natural resource regulatory requirement

Examples of eligible conservation activities include:

- Water quality restoration or enhancement projects, including nutrient management and sediment reduction
- Water quality conservation, restoration or enhancement projects relating to surface water groundwater resources including;
 - the conversion of irrigated cropland to the production of less water-intensive commodities, dry land farming
 - irrigation system improvement
- Drought mitigation
- Flood prevention

Examples of eligible conservation activities include:

- Water retention
- Air Quality improvement
- Habitat conservation, restoration, and enhancement
- Erosion control and sediment reduction
- Forest restoration
- Easement acquisition activities associated with wetland restoration and protection or the preservation of working agricultural lands.

Partnership Agreements:

- **Partnership agreements may not exceed 5 years;** however, NRCS may extend the agreement 1 time for up to 12 months
- The partnership agreement defines the scope of the project, including:
 - Eligible activities to be implemented
 - Potential agricultural or nonindustrial private forest operation affected
 - Local, State, multi-State or other geographic area covered
 - Planning, outreach, implementation and assessment to be conducted

Partners are responsible for:

- Contributing a significant portion of the overall costs
- Providing outreach and education to eligible producers for potential participation in the project
- Acting on a landowner's or producer's behalf, if requested by the landowners or producer in applying for assistance
- Leveraging financial or technical assistance provided by NRCS with additional funds to help achieve the project objectives
- Conducting and providing an assessment of the project costs and conservation effects

Additional Program Provisions

- Allows the Secretary to waive AGI if needed to fulfill purposes of the program
- Allows adjustments to discretionary rules of covered program with Secretary's approval, if requested by partner
- No funding may be used to cover partner administrative costs

Questions and Comments



Non-Discrimination Statement

- "The U.S. Department of Agriculture (USDA) prohibits discrimination in all of its programs and activities on the basis of race, color, national origin, age, disability, and where applicable, sex, marital status, familial status, parental status, religion, sexual orientation, political beliefs, genetic information, reprisal, or because all or part of an individual's income is derived from any public assistance program. (Not all prohibited bases apply to all programs.) Persons with disabilities who require alternative means for communication of program information (Braille, large print, audiotape, etc.) should contact USDA's TARGET Center at (202) 720-2600 (voice and TDD)."

To file a complaint of discrimination, write to USDA, Assistant Secretary for Civil Rights, Office of the Assistant Secretary for Civil Rights, 1400 Independence Avenue, S.W., Stop 9410, Washington, DC 20250-9410, or call toll-free at (866) 632-9992 (English) or (800) 877-8339 (TDD) or (866) 377-8642 (English Federal-relay) or (800) 845-6136 (Spanish Federal-relay). USDA is an equal opportunity provider and employer.