

## Facebook Page – Summary and Questions

For setup - FB needs:	My suggestions (in Bold)
<b>Name</b>	<b>Winkelman Natural Resource Conservation District</b>
<b>Facebook web address</b> “Choose a unique Facebook web address to make it easier for people to find your Page. Once this is set, it can only be changed once.”	<a href="http://www.facebook.com/wnrkd">www.facebook.com/wnrkd</a> but could be whatever you want
<b>Type</b>	<ul style="list-style-type: none"> <li>• <b>Government Organization</b></li> </ul> Other options: <ul style="list-style-type: none"> <li>• “Organization” or</li> <li>• Local Business or Place (1 NRCD designates this)</li> <li>•</li> </ul>
<b>Preferred Page Audience (Optional)</b>  “Anyone can find your Page, but we'll do our best to put it in front of the people who matter to you most. Edit your preferred Page audience to reflect who you'd most like to connect with.”	We can designate: <ul style="list-style-type: none"> <li>• A location(county, state, city, or zipcode) <b>Arizona?</b></li> <li>• Age range (<b>all</b>)</li> <li>• Gender (<b>all</b>)</li> <li>• Interests – Can select from various listings.</li> </ul> <b>Possibly relevant:</b> <ul style="list-style-type: none"> <li>✓ Conservation (ethic)</li> <li>✓ Geography</li> <li>✓ Natural environment</li> <li>✓ Wilderness</li> <li>✓ Agriculture</li> <li>✓ Home and garden</li> <li>✓ Sustainability</li> </ul>
<b>Posting Ability</b>	“Allow others to post?” <ul style="list-style-type: none"> <li>• If so, allow photos/videos?</li> <li>• If so, review posts first?”</li> </ul> <b>Up to you. We can always review posts first. If posts are not allowed, anyone who is not an administrator/editor would be blocked from posting on our wall. Including WNRCD folks.</b>
<b>Expiring Posts</b>	“Allow people who manage this page to select a time when posts unpublish?”
<b>Messages</b>	“Allow people to contact my page privately by showing the message button?” “ <b>Yes definitely</b>

## General Settings

FB Setting Options:	
Tagging Ability	"Allow others to tag photos and videos posted by WNRCD"
Country Restrictions	"Restrict viewing to certain countries or block certain countries?"
Age Restrictions	"Page is shown to everyone" (or designate specific ages)
Page Moderation	"Block posts or comments containing the following words:"
Profanity Filter	"You can choose whether to block profanity from your Page, and to what degree. Facebook determines what to block by using the most commonly reported words and phrases marked offensive by the community." <b>Choice is Off/Medium/Strong</b>
Similar Page Suggestions	"Include WNRCD when recommending similar pages people might like on a page timeline."
Comment Ranking	"Comments with the most likes or replies will appear first below your posts, as will comments from other verified Pages and profiles. When using your Facebook Page on your computer's browser, you'll also have the option to sort by Recent Activity to see the most recent comments first."
Page Managers	<p>You will have to decide who the page managers will be. It looks like page managers need a personal FB account and then administer WNRCD's from their personal login.</p> <p>There are different levels of page management– Admin has the most ability to do stuff on the page, Editor is next, then moderator and so forth. To read more about this, go to your own FB page, click on "settings" (top right) then "page roles."</p>

## RE: Comments

From what I read on the help page, there is not a way to block comments in general. You can block a specific individual from commenting, however. And you can implement the profanity filter, plus block other specific words.



## CONTENT

To create a FB page, you will need a description and profile photo for our wall. Also, a first post.

### Description:

What it says on the WNCRD website:

The stated goal of the Winkelman NRCD is "to support and encourage the proper and wise sustained use and management of our basic renewable and non-renewable natural resources utilizing sound science and valid on-ground experience." The District attempts to provide leadership in order to promote good management of the natural resources of the district through coordination conservation and development programs resulting in the wise use of lands within the district.

We could use the above, verbatim, if you like..... or something along the lines of:

The Winkelman Natural Resources Conservation District (WNCRD) is one of many NRCD's across the nation. WNCRD is a local unit of government established under state and tribal law, and is governed by locally elected and appointed officials. WNCRD covers an area of over 1.6 million acres, the majority of which are located in eastern Pinal County of southern Arizona.

The goal of WNCRD is to provide leadership that encourages the prudent use and management of our land and water resources, based on sound science and valid on-ground experience. We serve as a liaison between government agencies and local landowners and managers, coordinating conservation programs and promoting the wise use of our resources in our district.

### Examples from other NCRD's

Gila Valley: "The Gila Valley Natural Resource Conservation District was organized on December 1941. The purpose of the Gila Valley NRCD is to provide local leadership and education to ensure the wise use and management of all natural resources within the district."

Coconino: "It took a manmade disaster in the Great Plains called the "Dust Bowl" to awaken the nation regarding concerns over natural resource management."

Poultney-Mettowee (VT): "PMNRCD works to develop programs within the District that will encourage the best practices for conservation of soil and clean water."

Wilcox-San Simone - none

Rutland VT - none

## PICTURES

On FB there is a cover photo (the large one) and there can also be a profile picture (a smaller one).

Verde NRCD
Jane Home Find Friends

Like Follow Message

Timeline About Photos Reviews More

66 people like this

Invite friends to like this Page

ABOUT

The Verde Natural Resource Conservation District (NRCD) was organized in December, 1941, and has taken a leading role in helping local Verde Valley area...

READ MORE

<http://www.verde.org/>

PHOTOS

POSTS TO PAGE

**Friends of Verde River Greenway**  
April 7 at 7:15am

<https://azgives.givebig.org/c/Gives.../a/verderivergreenway-az TODAY!...> See More

Like Comment

**Verde River Valley Nature Organization - VRVNO**  
December 27, 2013 at 9:46am

The Verde River Valley Nature Organization (VRVNO) is a non-profit o... See More

Like Comment

REVIEWS

**Verde NRCD**  
July 15, 2013 ·

[http://www.ourpubliclands.org/.../files/NWF\\_PublicLands.pdf](http://www.ourpubliclands.org/.../files/NWF_PublicLands.pdf)

[http://www.ourpubliclands.org/sites/default/files/files/NWF\\_PublicLands.pdf](http://www.ourpubliclands.org/sites/default/files/files/NWF_PublicLands.pdf)

OURPUBLICLANDS.ORG

Like Comment Share

**Verde NRCD**  
July 15, 2013 ·

Hello from the Verde River Basin Partnership!

We have some exciting news to share with you...

On June 27, 2013, U.S. Senators John McCain and Jeff Flake sent a letter to elected officials in the Verde River Watershed urging them "to develop a long-term water management strategy that protects the Verde River."...

See More

Welcome to Verde River Basin Partnership - Verde River Basin Partnership

The Partnership is a non-profit organization that provides scientific education and outreach for the...

VRBP.ORG

Like Comment Share

**Verde NRCD**  
July 15, 2013 ·

Thanks to many of you, I have acquired friendships and partner relationships while here and which will follow me all the way back to South Dakota....

Continue Reading

Like Comment Share

Christa Schmieder and Lauren Whitsitt are now friends.

J'Lene Williams likes Brittany Ehlenberg's photo.

Vince Turcotte added 6 new photos. Best stop yet on the road trip. Arches National Park was stunning. This alone would've been worth the trip! — at Arches National Park.

Charlie Allen likes Lesley Tellez's link.

Terri Szoke likes LiteMiami: 101.5 LITE FM Radio's photo.

Ann Mason likes SA Sha's post.

Classic Jew amazon.com likes Henry Cdo likes Carlos A Ramirez's photo. Free shipping and returns on eligible items. Shop Now

Mimi Papp likes Moe Jerant's photo.

Jane Terrill Moore likes Natalie Patterson's photo.

Show Older

Jeep Phillips Mobile

Del Bogart Mobile

GROUP CONVERSATIONS

Search

<https://www.facebook.com/VerdeConservationDistrict?fref=ts>

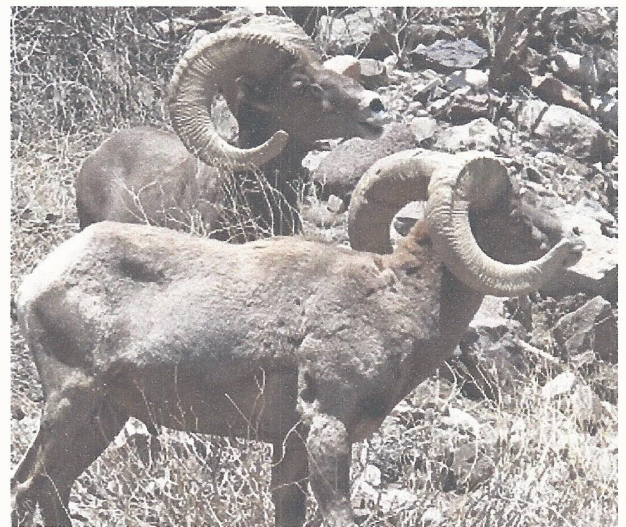
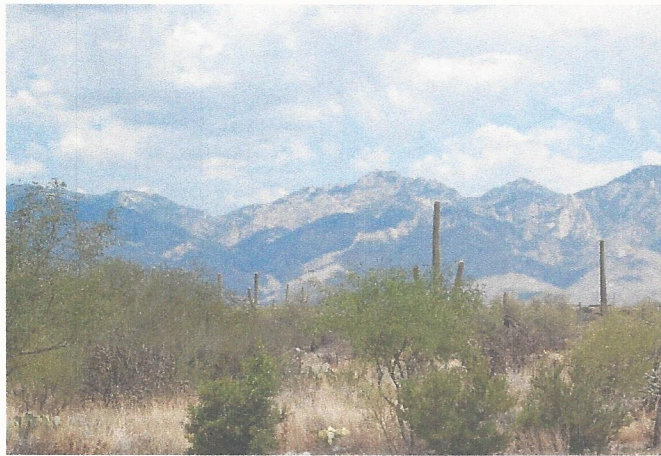
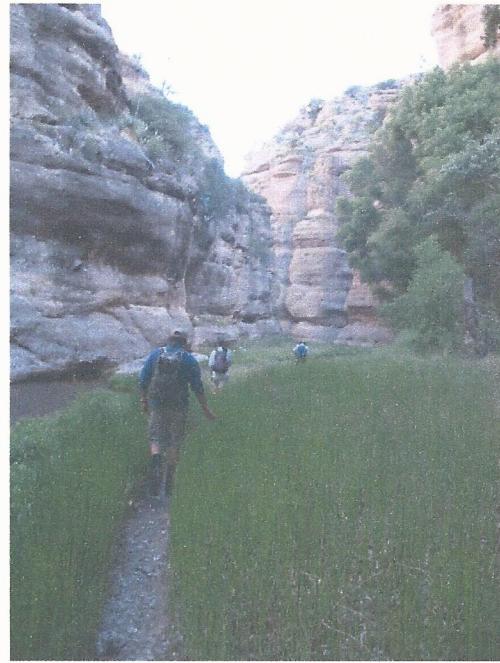
7/14/2015







Here are a few photos I have....





## **Other items to post?**

Perhaps the AZ district map???

## **FIRST POST – starting point, suggestions welcome.....**

*The Winkelman Natural Resource Conservation District is now on Facebook!*

*The goal of our page is to provide helpful information about conservation and to encourage all who live in our district (as well as other districts) to become involved in protecting the vast and wonderful natural resources we have here in Arizona.*

*We hope our new page helps us better connect with our local community.... Please “like” us and share us with your friends!*

*Follow us for announcements about events, conservation news, WNRCD meetings, opportunities for networking, and more....*

## **OTHER POSTS (future) –**

Surveys? We can post a link to Google

Files, flyers

Scholarships

Events

Coupons and deals (links)